

NO. OF SHEETS	1
SHEET	1
DATE	
SCALE	
PROJECT	
CLIENT	
DESIGNER	
APPROVER	

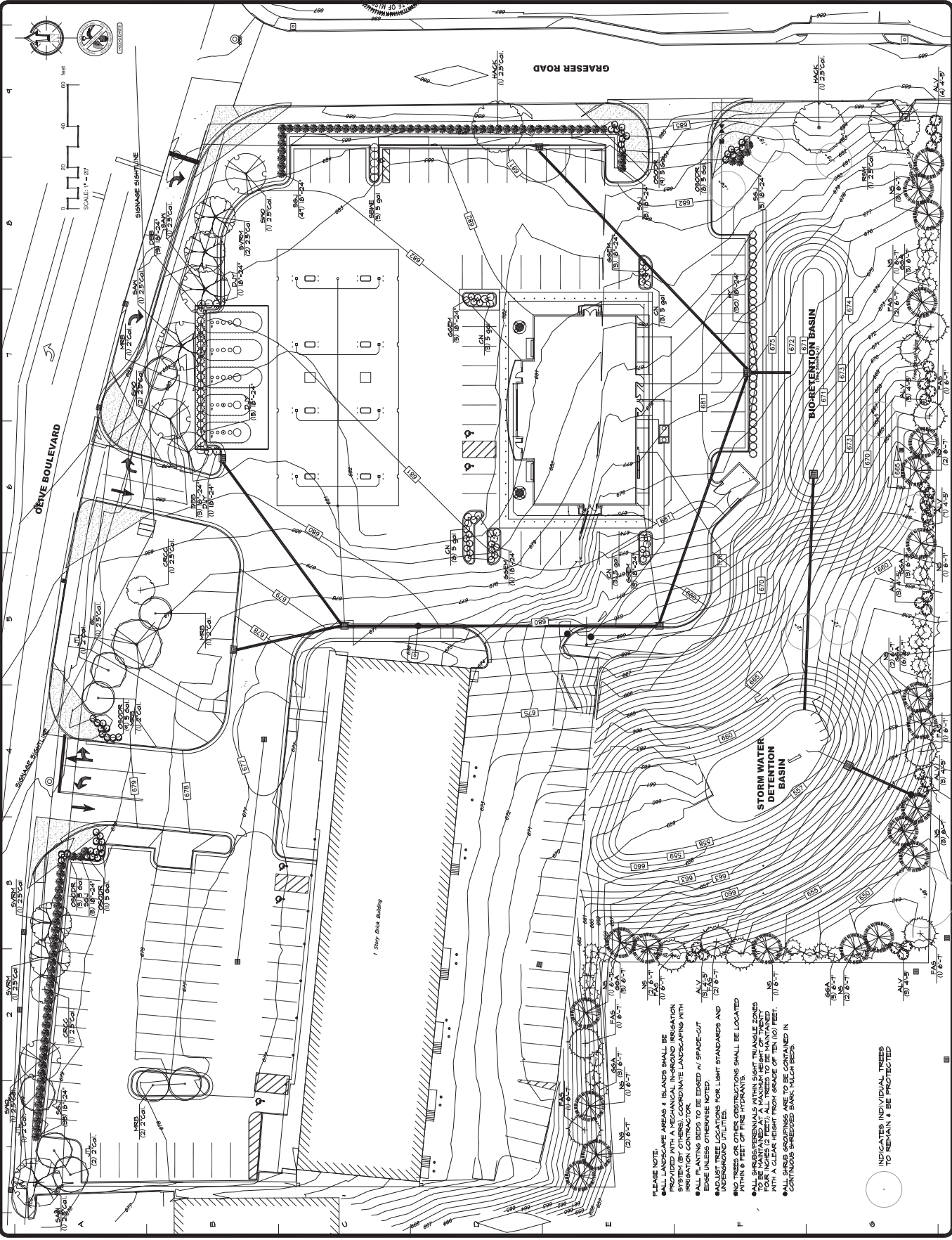
PLANTING PLAN FOR THE PROPOSED
QuikTrip #613
 CREVE COEUR, MISSOURI

Landscaping TECHNOLOGIES

RANDALL W. HANCOCK
 LANDSCAPE ARCHITECT
 DATE: 1-18-2020
 PROJECT: QUIKTRIP #613
 4175 CREVE COEUR BLVD. SUITE 100
 ST. LOUIS, MISSOURI 63114
 (314) 433-1111

REGISTERED PROFESSIONAL LANDSCAPE ARCHITECT
 MISSOURI LICENSE NUMBER 019
 STATE OF MISSOURI

REVISIONS	BY	DATE



PLEASE NOTE:
 • ALL LANDSCAPE AREAS & ISLANDS SHALL BE PROVIDED WITH A MECHANICAL IN-GROUND IRRIGATION SYSTEM. CONTRACTOR TO PROVIDE APPROPRIATE LANDSCAPING WITH IRRIGATION CONTRACTOR.
 • ALL PLANTING BEDS TO BE EDGED w/ SPACE-GUT EDGE UNLESS OTHERWISE NOTED.
 • ADJUST TREE LOCATIONS FOR LIGHT STANDARDS AND UNDERGROUND UTILITIES.
 • ALL SHRUBS/PERENNIALS WITHIN SIGHT TRIANGLE ZONES TO BE PLANTED TO BE AT A MAXIMUM HEIGHT OF 10 FEET WITH A CLEAR HEIGHT FROM GRADE OF TEN (10) FEET.
 • ALL SHRUB GROUPINGS ARE TO BE CONTAINED IN CONTIGUOUS SHRUBBED BARK MULCH BEDS.

○ INDICATES INDIVIDUAL TREES TO REMAIN & BE PROTECTED

