

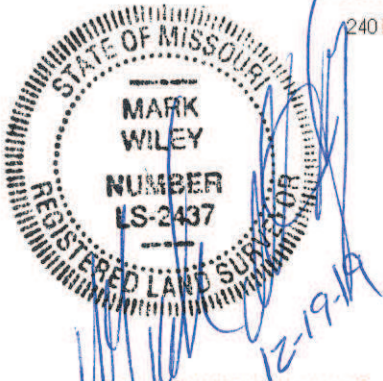


QuikTrip #613  
Boundary Description  
Tracts in United States Survey 1962 and Section 2,  
Township 45 North, Range 5 East  
City of Creve Coeur  
St. Louis County, Missouri

Part of United States Survey 1962 and part of the North half of Section 2, Township 45 North, Range 5 East and being described in Book 17821 page 2221, Book 23202 page 119 and 23466 page 2128 of the St. Louis County Land Records and being described as follows:

Beginning at the Northeast corner of Lot 1 Mary Meadows a subdivision filed for record in Plat Book 72 page 25 of the St. Louis County Land Records; thence South 86 degrees 04 minutes 29 seconds West along the North line of said Lot 1 a distance of 109.50 feet to a point being the Southeast corner of a tract conveyed to A&A Properties LLC by Deed Book 17841 page 0360 of the said Land Records; thence leaving said North line of Lot 1 North 00 degrees 06 minutes 28 seconds East along the East line of the property conveyed to said A&A Properties LLC as previously mentioned a distance of 282.26 feet to a point on the South line of Olive Boulevard (width varies); thence leaving said East line of Lot 1, South 84 degrees 15 minutes 15 seconds East along the South line of said Olive Boulevard a distance of 309.32 feet to a point; thence South 83 degrees 21 minutes 08 seconds East a distance of 54.31 feet to a point; thence South 72 degrees 43 minutes 32 seconds East a distance of 160.57 feet to a point on the West line of Graeser Road (width varies); thence leaving Olive Boulevard as previously mentioned South 00 degrees 36 minutes 57 seconds East along the West line of said Graeser Road a distance of 356.08 feet to a point on the North line Martin Grove a subdivision filed for record in Plat Book 299 page 20 of the previously mentioned Land Records; thence leaving Graeser Road North 89 degrees 03 minutes 57 seconds West along the North line of said Martin Grove subdivision a distance of 410.71 feet to a point in the East line of Mary Meadows as previously mentioned; thence leaving the North line of Martin Grove subdivision North 00 degrees 10 minutes 47 seconds East along the East line a distance of 159.54 feet to the point of beginning and containing 192, 916 square feet or 4.43 acres.

Subject to Easements, Restrictions and Covenants of Record if any



QuikTrip #613  
Boundary Description  
Tracts in United States Survey 1962 and Section 2,  
Township 45 North, Range 5 East  
City of Creve Coeur  
St. Louis County, Missouri

Part of United States Survey 1962 and part of the North half of Section 2, Township 45 North, Range 5 East and being described in Book 17821 page 2221, Book 23202 page 119 and 23466 page 2128 of the St. Louis County Land Records and being described as follows:

Beginning at the Northeast corner of Lot 1: Mary Meadows a subdivision filed for record in Plat Book 72 page 25 of the St. Louis County Land Records; thence South 86 degrees 04 minutes 29 seconds West along the North line of said Lot 1 a distance of 109.50 feet to a point being the Southeast corner of a tract conveyed to A&A Properties LLC by Deed Book 17841 page 0360 of the said Land Records; thence leaving said North line of Lot 1 North 00 degrees 06 minutes 28 seconds East along the East line of the property conveyed to said A&A Properties LLC as previously mentioned a distance of 282.26 feet to a point on the South line of Olive Boulevard (width varies); thence leaving said East line of Lot 1, South 84 degrees 15 minutes 15 seconds East along the South line of said Olive Boulevard a distance of 309.32 feet to a point; thence South 83 degrees 21 minutes 08 seconds East a distance of 54.31 feet to a point; thence South 72 degrees 43 minutes 32 seconds East a distance of 160.57 feet to a point on the West line of Graeser Road (width varies); thence leaving Olive Boulevard as previously mentioned South 00 degrees 36 minutes 57 seconds East along the West line of said Graeser Road a distance of 356.08 feet to a point on the North line Martin Grove a subdivision filed for record in Plat Book 299 page 20 of the previously mentioned Land Records; thence leaving Graeser Road North 89 degrees 03 minutes 57 seconds West along the North line of said Martin Grove subdivision a distance of 410.71 feet to a point in the East line of Mary Meadows as previously mentioned; thence leaving the North line of Martin Grove subdivision North 00 degrees 10 minutes 47 seconds East along the East line a distance of 159.54 feet to the point of beginning and containing 192, 916 square feet or 4.43 acres.

Subject to Easements, Restrictions and Covenants of Record if any